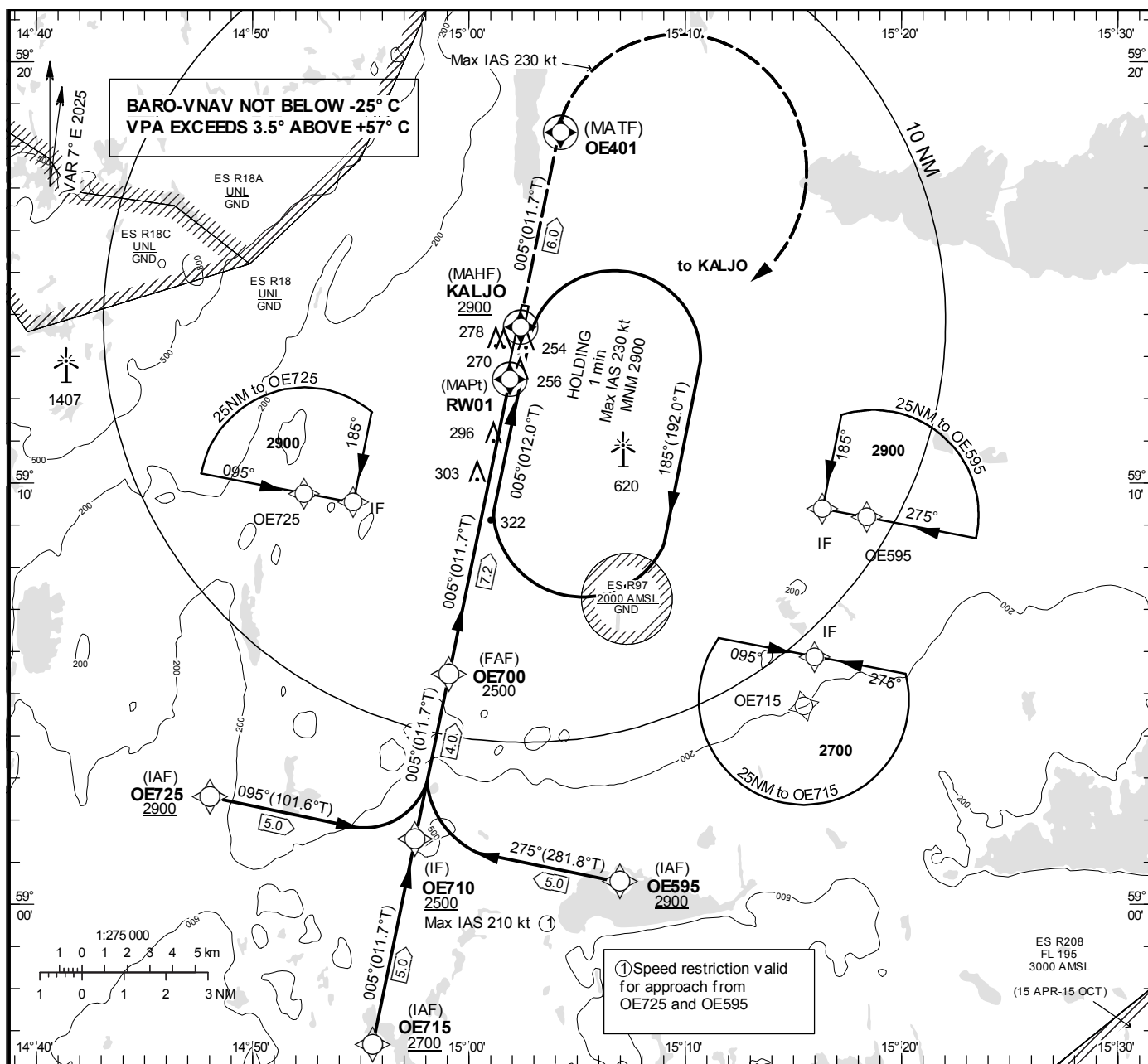


**INSTRUMENT  
APPROACH  
CHART – ICAO****THR ELEV 161.3 ft, AD ELEV 192 ft**OCH are related to THR.  
BRG are MAG (True).  
ALT, HGT and ELEV in ft.

ÖREBRO TOWER

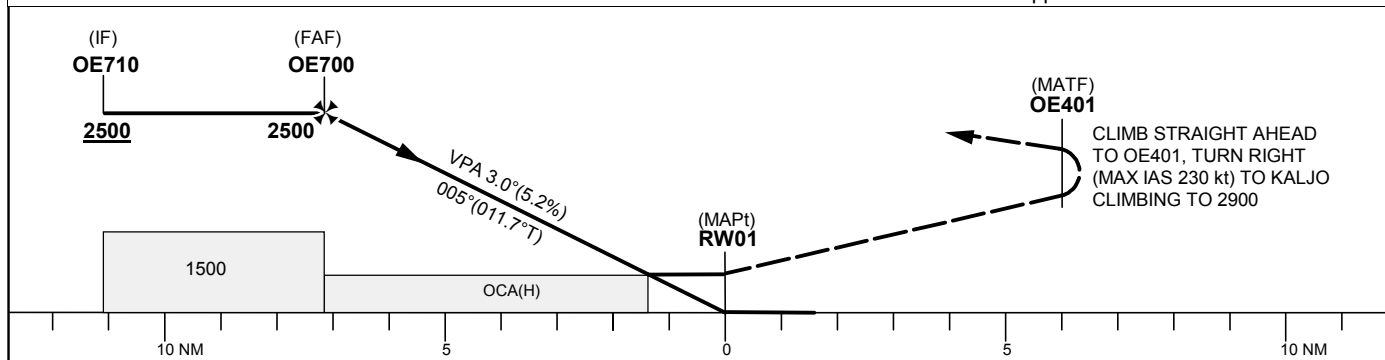
120.280



TA 5000 ft AMSL

RDH 54 ft

Missed Approach Max IAS 230 kt



OCA (H)						Final approach		Distance FAF-MAPt 7.2 NM					
Cat of ACFT	A	B	C	D	D <sub>L</sub>	Dist to RW 01		7	6	5	4	3	2
LPV	384 (223)	396 (235)	421 (260)	431 (270)		ALT		2450	2130	1810	1490	1170	850
LNAV/VNAV	387 (226)	399 (238)	407 (246)	439 (278)		GS	kt	80	100	120	140	160	180
LNAV			570 (410)			Rate of descent	ft/min	425	530	635	745	850	955
Circling	600 (410)	690 (500)		1020 (830)									

CHANGE: Editorial

## ÖREBRO

## RNP RWY 01 via OE595

Path Desc	Waypoint Identifier	Fly-over	Course °M(°T)	Dist (NM)	Turn Dir	Altitude	Speed	VPA/ RDH	Rec Navaid	Navigation Specification
IF	OE595	-	-	-	-	+2900	-	-	-	RNP APCH
TF	OE710	-	275°(281.8°)	5.0	R	+2500	-210	-	-	RNP APCH

## RNP RWY 01 via OE715

Path Desc	Waypoint Identifier	Fly-over	Course °M(°T)	Dist (NM)	Turn Dir	Altitude	Speed	VPA/ RDH	Rec Navaid	Navigation Specification
IF	OE715	-	-	-	-	+2700	-	-	-	RNP APCH
TF	OE710	-	005°(011.7°)	5.0	-	+2500	-	-	-	RNP APCH

## RNP RWY 01 via OE725

Path Desc	Waypoint Identifier	Fly-over	Course °M(°T)	Dist (NM)	Turn Dir	Altitude	Speed	VPA/ RDH	Rec Navaid	Navigation Specification
IF	OE725	-	-	-	-	+2900	-	-	-	RNP APCH
TF	OE710	-	095°(101.6°)	5.0	L	+2500	-210	-	-	RNP APCH

Path Desc	Waypoint Identifier	Fly-over	Course °M(°T)	Dist (NM)	Turn Dir	Altitude	Speed	VPA/ RDH	Rec Navaid	Navigation Specification
IF	OE710	-	-	-	-	+2500	-	-	-	RNP APCH
TF	OE700	-	005°(011.7°)	4.0	-	@2500	-	-	-	RNP APCH
TF	RW01	Y	005°(011.7°)	7.2	-	@215	-	-3.0/54	-	RNP APCH
TF	OE401	Y	005°(011.7°)	6.0	-	-	-	-	-	RNP APCH
DF	KALJO	Y	-	-	R	+2900	-230	-	-	RNP APCH

## ESOE Holding KALJO

Path Desc	Waypoint Identifier	Fly-over	Course °M(°T)	Dist (NM)	Turn Dir	Altitude	Speed	VPA/ RDH	Rec Navaid	Navigation Specification
HM	KALJO	Y	005°(012.0°)	-	R	+2900	-230	-	-	RNAV 1

## FAS Data Block

## RNP RWY 01

## Input data

Operation Type	0
SBAS Provider	1 (EGNOS)
Airport Identifier	ESOE
Runway	01
Runway Letter	0 (None)
Approach Performance Designator	0
Route Indicator	
Reference Path Data Selector	0
Reference Path Identifier	E01A
LTP/FTP Latitude	591227.1675N
LTP/FTP Longitude	0150153.1465E
LTP/FTP Ellipsoidal Height (metres)	77.9
FPAP Latitude	591410.6860N
Delta FPAP Latitude (seconds)	103.5185
FPAP Longitude	0150234.9255E
Delta FPAP Longitude (seconds)	41.7790
Threshold Crossing Height	54.0
TCH Units Selector	0 (feet)
Glidepath Angle (degrees)	3.00
Course Width (metres)	105.00
Length Offset (metres)	0
HAL (metres)	40.0
VAL (metres)	50.0

## Output data

Data Block	10 05 OF 13 05 01 00 00 01 31 30 05 3F BC 68 19 F5 66 73 06 0B 17 BD 28 03 66 46 01 1C 02 2C 01 64 00 C8 FA 42 F5 F6 84
Calculated CRC Value	42F5F684

## Required Additional Data

ICAO Code	ES
LTP/FTP Orthometric Height (metres)	49.2